

EICC Risk Assessment Tool – Introduction and instructions



What is the EICC Risk Assessment Tool?

EICC and Verisk Maplecroft are excited to launch a new, powerful tool to support EICC members in their supply chain risk assessment process. The Risk Assessment Tool links Verisk Maplecroft's Global Risk Portfolio to the EICC Code of Conduct, allowing members to quickly and easily access a high-level risk assessment of EICC code-related risks for their entire supply chain.



The tool is intended to be used as a first step in the EICC risk assessment process, and should be complemented by use of the EICC Self-Assessment Questionnaire (SAQ for 80% of tier 1 manufacturing supplier spend) and VAP audits (where necessary). For more information, see EICC Member Compliance responsibilities. The EICC Risk Assessment Tool allows users to:

- Evaluate individual supplier risk across key pillars, including labour, health and safety, ethics, and environmental risks through the supplier list view, using a scale of 0-10 for all risks (where 0 indicates the highest risk)
- Identify where to prioritise mitigation strategies by filtering and sorting supplier data to determine which suppliers should be targeted for SAQs, audits, and other remedial measures
- Compare individual issues and supplier sites to strategically evaluate (a) what sites are high risk and (b) the implications of switching / diversifying to new or other existing suppliers

How do I access the tool?

The Risk Assessment Tool is made available to all EICC members through the 'Apps' menu in EICC-On at <https://www.eicc-on.info> (Figure 1).

Through the EICC-on platform, you will be able to register with Verisk Maplecroft and link directly to the tool dashboard (Figure 2).

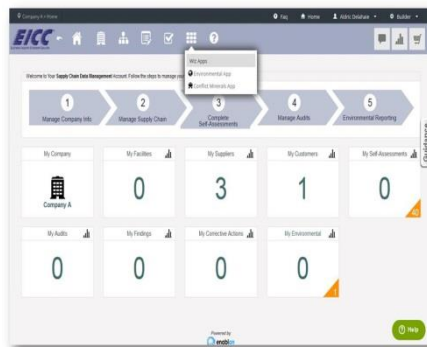


Figure 1: To access the Risk Assessment Tool, select Verisk Maplecroft in the 'Apps' drop down menu in EICC-On.

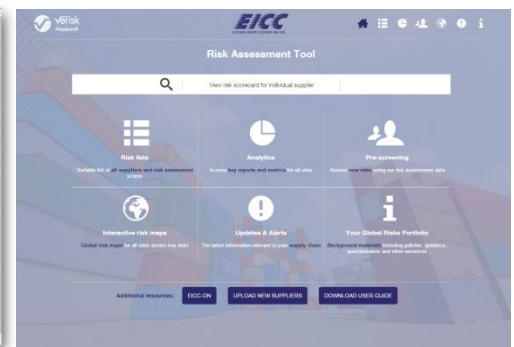


Figure 2: Once logged in to Verisk Maplecroft, you will be taken directly to the Risk Assessment Tool dashboard.

What are the main functions of the tool, and how do I use them?

The **dashboard** allows easy navigation to the complete range of modules within the tool, including:

1. **Risk lists for all suppliers:** sortable list of all suppliers and risk assessment scores according to country, product/service, and risk level (Figure 3). Data presented in the supplier list view is available to export as comma-separated values (CSV) to Microsoft Excel for further internal analysis.



Figure 3: The supplier list view allows users to sort / filter supplier data to identify high risk suppliers across pillars

From the risk list, individual supplier scorecards are accessed (Figure 4). In-depth information presented in the scorecards includes: a comprehensive risk scorecard with 4 pillar indices; corresponding risk maps for all pillars; benchmarking against other sites by country and industry; and related Global Risks Forecast articles and Stakeholder Views.

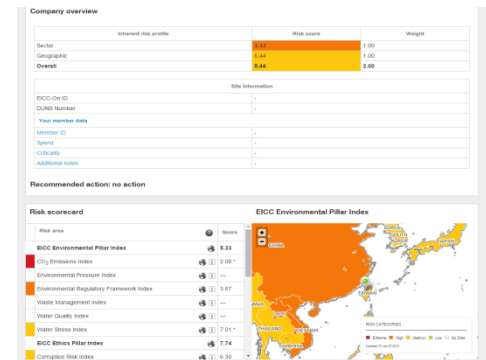


Figure 4: Access individual supplier scorecards for in-depth risk information

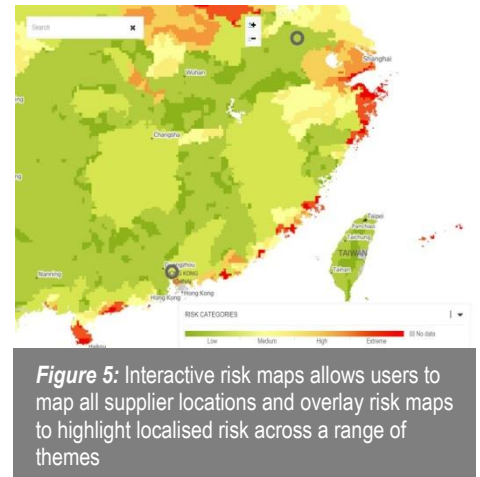
2. **Analytics:** Quantitative breakdown of supply chain characteristics by inherent risk, location, and sector, allowing users to gain rapid insight into supply chain trends and the risk landscape.

3. **Pre-screen potential / new suppliers:** assess potential or new suppliers using existing risk assessment data. This feature allows you to enter the location, product/service, and SAQ or audit risk level (0-10 where 0 is the highest risk) for a potential supplier in order to compare the supplier's risk level with your current supplier base.

4. **Interactive risk maps** (Figure 5) allow users to easily map and visualise supplier locations on interactive maps that can be filtered based on an individual category (e.g. all supplier coordinates in water stressed regions, or all facilities in a specific sub-region). Individual suppliers can also be selected for site comparison according to customisable settings and filters. In order to use the mapping tool:

- a) Select the relevant sites/country/product categories which you would like to compare
- b) Select the appropriate risk categories based on the EICC Code of Conduct (Labour, H&S, Ethics, Environment)
- c) Select specific sites from the narrowed list or simply view all of them
- d) Click compare, and click the left-pointing arrow to minimise the search options, revealing a geographic comparison of the sites by risk category
- e) At the top of the screen, you have further options to a) view the global map of selected suppliers sites, and b) interrogate the data by site location and risk level

5. **Updates and alerts:** access to Verisk Maplecroft's Global Risk Forecasts and Stakeholder Views providing contextual social and political analysis regarding the local business environment in each supplier's country of operation.



How do I upload suppliers into the tool?

1. From the Risk Assessment Tool **dashboard**, click on the **“Upload New Suppliers”** button at the bottom of the page. Once you click the button, you will see the text “Site Upload” at the top of the page.
2. Download the **Data Upload Template** (spreadsheet) by clicking on the link
3. Populate the *Data Upload Template* with your supplier information
 - Only the Site Name, Country, and City are required fields
 - While other fields are optional, inputting additional information (e.g. DUNS number, address, spend, etc.) will prevent duplicates and increase the functionality/value of the tool
 - The Country, Product Category/Vertical, and Criticality fields include drop down boxes, as there are only a pre-set group of acceptable responses
4. Copy and paste the data from the *Data Upload Template* into the “Suppliers*” field of the website
 - Click any one of the headings (Name, Country, etc.). This prevents Excel from selecting any blank rows when using 'select all'
 - Use 'select all' in the spreadsheet by pressing Ctrl + A on your keyboard
 - Copy the data, and then paste it into the field of the website
 - You can upload thousands of suppliers at a time, but you may wish to begin with a small test group in order to ensure that your data is correctly formatted
5. Click Submit to upload the data
 - If there are errors in the formatting of your data (e.g. country mis-spelled, duplicates, etc.), hover your mouse over any indicated rows to determine what needs to be corrected
6. Once the errors have been corrected, click “Submit” again to upload your data into the Risk Assessment Tool